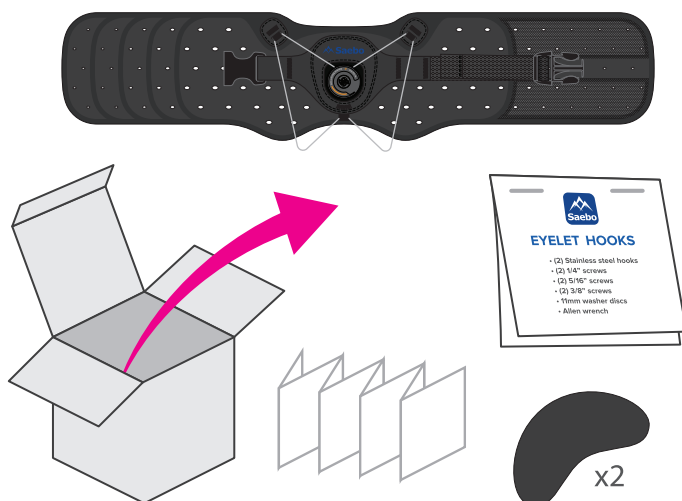


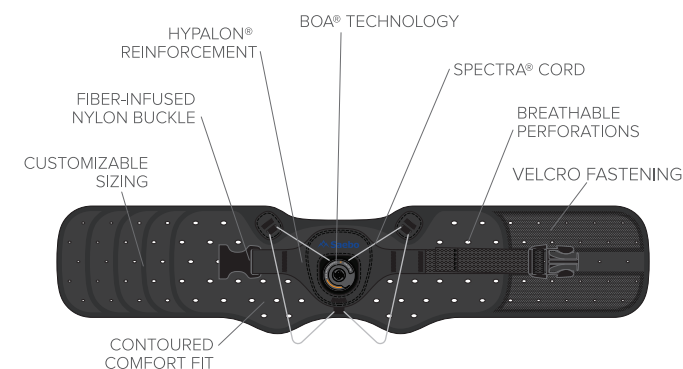


## WHAT'S IN THE BOX



1

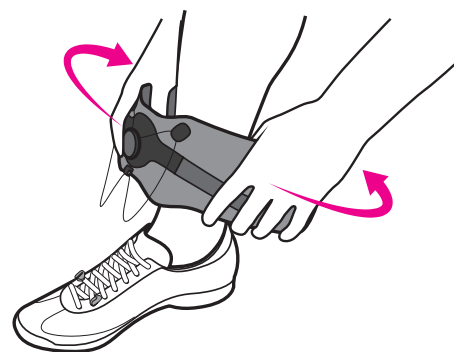
## PARTS OF THE BRACE



2

## ORIENT THE BRACE

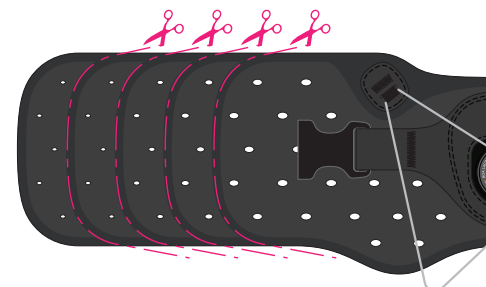
- Place the Boa® center to your foot or shoe.
- Wrap brace around ankle to test for fit.



3

## TRIM THE BRACE

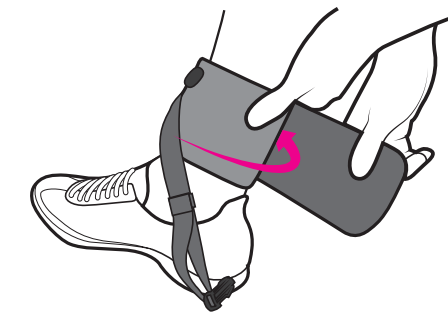
- Trim brace **if** needed. (note: make sure not to cut sewn areas)



4

## SECURE VELCRO

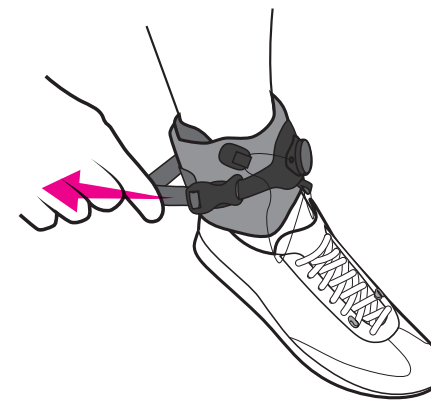
- Place the Boa® center to your foot or shoe again.
- Wrap brace **tightly** around ankle.
- Place the left side first against your leg, then follow with right to secure velcro.



5

## CONNECT THE BUCKLE

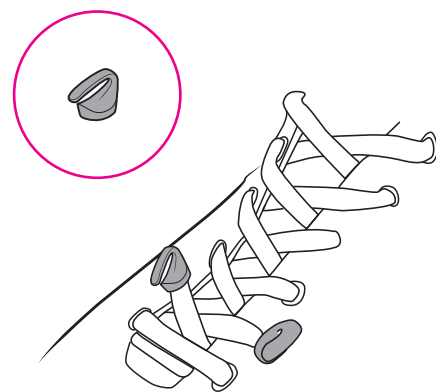
- With velcro secure, connect buckle in place.
- Adjust strap length as necessary.



6

## ATTACH EYELET HOOKS

- See the included Eyelet Hook package for instructions on proper installation and use.



7

## RELEASE BOA®

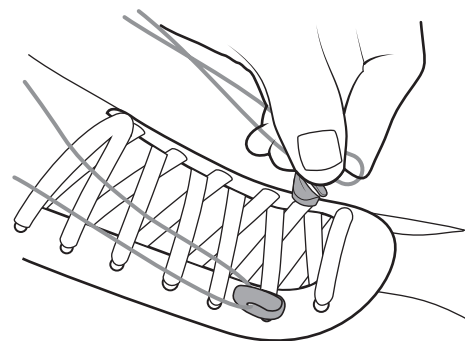
- Pull the face of the Boa® away from you.



8

## ATTACH CORD

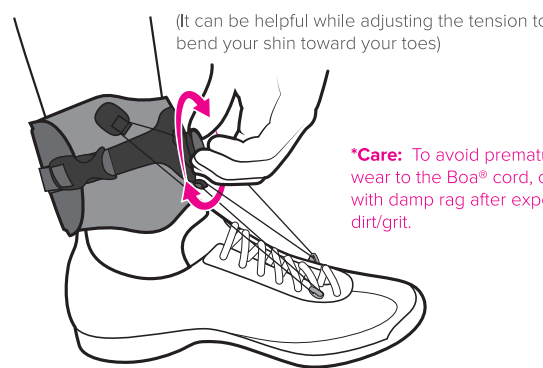
- With the Boa® outward, hold onto the spectra cord and pull toward Eyelets Hooks.
- Slip the cord into the Eyelet Hook openings.



9

## WIND THE BOA®

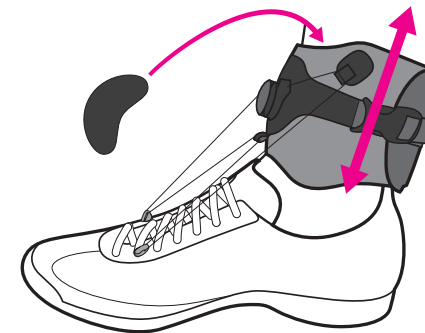
- Push the Boa® inward until it clicks.
- Wind the Boa® clockwise until the cord is **tight** and you have the lift and angle desired.



10

## ADJUST AS NEEDED

- If you feel pressure anywhere, make adjustments in the fit and height position of the brace around your ankle.
- If needed, use included pads to increase comfort.



11

## SEE THE VIDEOS

Visit our website to see instructional videos including how to punch new eyelets into practically any type of footwear.

[www.saebo.com/saebostep](http://www.saebo.com/saebostep)

Consult your doctor concerning your condition and the use of this brace.

12

## ORDER ADDITIONAL PARTS

**Saebo, Inc.**  
Six LakePointe Plaza  
2709 Water Ridge Parkway  
Suite 100  
Charlotte, NC 28217  
888-284-5433  
sales@saebo.com  
www.saebo.com

Hypalon® is a registered trademark of E.I. du Pont de Nemours and Company.  
Boa® is a registered trademark of Boa Technology Inc.  
Spectra® is a registered trademark of Honeywell International Inc.

